

Nenè quadro Table

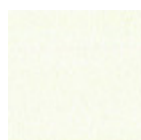
design Paolo Vernier, 2013

Nenè stackable table with four legs base in lacquered steel. Melamine or hpl top.

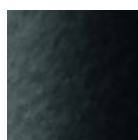


Colors and Materials

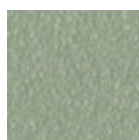
Structure



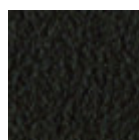
White Steel



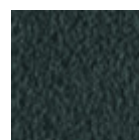
Black Steel



Sand Steel



Brown Steel

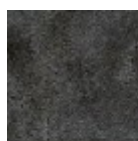


Grafite Steel

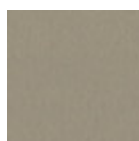
Coating



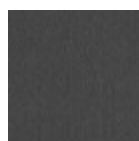
White Melamine



Black Melamine



Sand melamine



Graphite Melamine



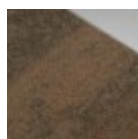
White hpl black core



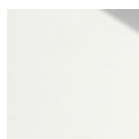
Black hpl



Hpl Cemento



Hpl Corten



White hpl white core

Dimensions

Dimensions
Image not found or type unknown

	A (cm) (inch)	B (cm) (inch)	C (cm) (inch)
75x75 (cm) (inch)	75 29.5	75 29.5	75 29.5
85x85 (cm) (inch)	75 29.5	85 33.5	85 33.5

Volumetric Details

Weight 22.5 Kg

Volume 0.29 mc

Package 3

Downloads

3D Nenè 75x75 (zip) - <https://www.midj.com/images/uploads/resources/nene-75x75-3d.zip>

