



# Break 3 Bistrot Table

Break/3 bistro base available in chrome or painted steel.

Suitable only for round tops: ø60, ø70.



## Colors and Materials

### Structure



White Steel



Black Steel



Sand Steel



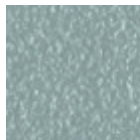
Brown Steel



Grafite Steel



Pastel Yellow Steel



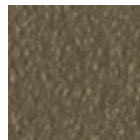
Light blue steel



Ocean Blue Steel



Bronze Steel



Fango Steel



Light Grey Steel



Ocher Steel



Facepowder Pink Steel



Red steel

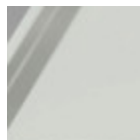


Sage Green Steel

### Coating



Melamine  
8 Colors



Extraclear Glossy  
White Glass



Transparent Glass



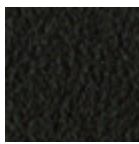
White Steel



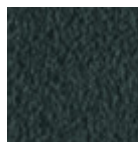
Black Steel



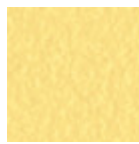
Sand Steel



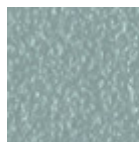
Brown Steel



Grafite Steel



Pastel Yellow Steel



Light blue steel



Ocean Blue Steel



Bronze Steel



Fango Steel



Light Grey Steel



Ocher Steel



Facepowder Pink Steel



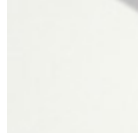
Red steel



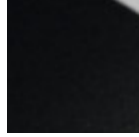
Sage Green Steel



Satin



White hpl black core



Black hpl



Hpl Cemento



Hpl Corten



White hpl white core

## Dimensions

Dimensions

## Volumetric Details

Weight 6 Kg

Volume 0.20 mc

Package 2

Image not found or type unknown

	<b>A (cm)</b> (inch)	<b>B (cm)</b> (inch)	<b>C (cm)</b> (inch)
<b>Break / 3 (cm)</b> (inch)	73 28.7	45 17.7	45 17.7