

# Ola CT 45 Coffee Table

design Paolo Vernier, 2016

Ola coffee table with legs and top in lacquered steel or with industrial effect. Suitable for outdoor use.



## Colors and Materials

### Structure



White Steel



Black Steel



Sand Steel



Brown Steel



Grafite Steel



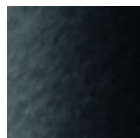
Industrial Steel

1 color

### Coating



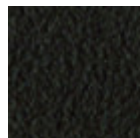
White Steel



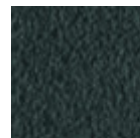
Black Steel



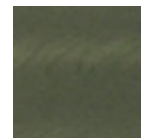
Sand Steel



Brown Steel



Grafite Steel



Industrial Steel

1 color

## Dimensions

Image not found or type unknown

Dimensions

	A (cm)	B (cm)	C (cm)
	(inch)	(inch)	(inch)
<b>Ola CT 45</b>	45	45	47
(cm)	17.7	17.7	18.5
(inch)			

## Volumetric Details

**Weight** 6 Kg

**Volume** 0.11 mc

**Package** 1