



Walter Coffee Table

Walter coffe table with four leg frame base in lacquered or chrome steel.
Top in satin stainless steel or ceramic.

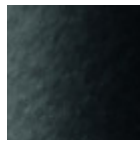


Colors and Materials

Structure



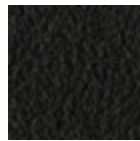
White Steel



Black Steel



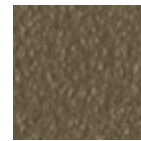
Sand Steel



Brown Steel



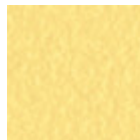
Grafite Steel



Fango Steel



Bronze Steel



Pastel Yellow Steel



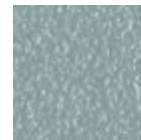
Ocher Steel



Red steel



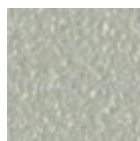
Sage Green Steel



Light blue steel



Ocean Blue Steel



Light Grey Steel



Facepowder Pink Steel



Chrome

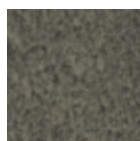
Coating



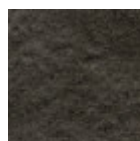
Satin



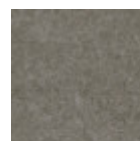
Polished Stainless



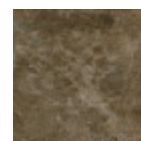
Lead Ceramic



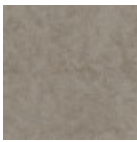
Charcoal Savoia Ceramic



Cement Savoia Ceramic



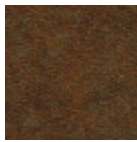
Emperador Marble Ceramic



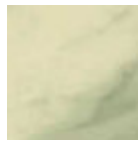
Oxide Sand Ceramic



Oxide White Ceramic

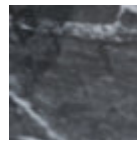


Corten Ceramic

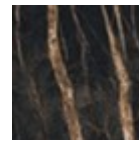


Ceramic with effect calacatta marble

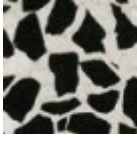
1 color



Black greek glossy marble ceramic



Noir desir glossy ceramic marble



Venetian glossy ceramic

Dimensions

Dimensions

Volumetric Details

Weight 9 Kg

Volume 0.12 mc

Package 1

Image not found or type unknown

	A (cm) (inch)	B (cm) (inch)	C (cm) (inch)
40x40 (cm) (inch)	50 19.7	40 15.7	40 15.7
60x40 (cm) (inch)	50 19.7	60 23.6	40 15.7