

# Slim H75 M Stool

design Paolo Vernier, 2017

Bar stool with sled base in lacquered steel or industrial effect. The versions in lacquered steel steel is suitable for the outdoors use.



## Colors and Materials

### Structure



White Steel



Black Steel



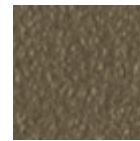
Sand Steel



Brown Steel



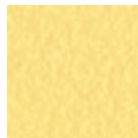
Grafite Steel



Fango Steel



Bronze Steel



Pastel Yellow Steel



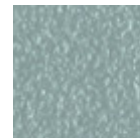
Ocher Steel



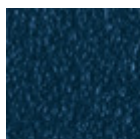
Red steel



Sage Green Steel



Light blue steel



Ocean Blue Steel

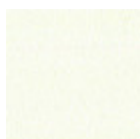


Facepowder Pink  
Steel



Light Grey Steel

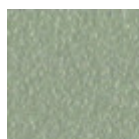
### Coating



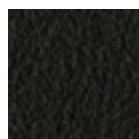
White Steel



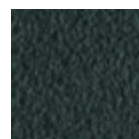
Black Steel



Sand Steel



Brown Steel



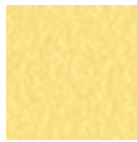
Grafite Steel



Fango Steel



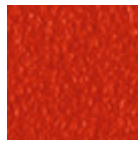
**Bronze Steel**



**Pastel Yellow Steel**



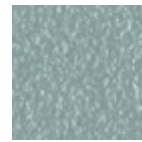
**Ocher Steel**



**Red steel**



**Sage Green Steel**



**Light blue steel**



**Ocean Blue Steel**



**Facepowder Pink Steel**



**Light Grey Steel**

## Dimensions

Dimensions

## Volumetric Details

**Weight** 10 Kg

**Volume** 0.28 mc

**Package** 1

Image not found or type unknown

	<b>cm</b>	<b>inch</b>
<b>A</b>	106	41.7
<b>B</b>	54	21.3
<b>C</b>	52	20.5
<b>D</b>	76	29.9