

Liù CT H40 Coffee Table

design Archirivolto, 2013

Coffee table with four legs base in wood and lacquered steel. Hpl top.

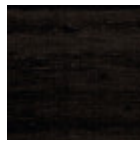


Colors and Materials

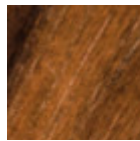
Structure



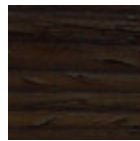
White Lacquered
Ash



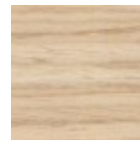
Black Lacquered
Ash



Lacquered ash
flamed walnut finish



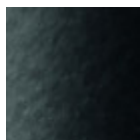
Lacquered Ash dark
oak finish



Lacquered ash
natural finish



White Steel



Black Steel

Coating



Radius 10 HPL

4 Colors

Dimensions

Dimensions
Dimensions not found or type unknown

	A (cm)	B (cm)	C (cm)
	(inch)	(inch)	(inch)
ø50 (cm)	40	50	50
(inch)	15.7	19.7	19.7
ø60 (cm)	40	60	60
(inch)	15.7	23.6	23.6

Volumetric Details

Weight 11 Kg

Volume 0.08 mc

Package 2

