



# Infinity Table

Table with round base in chromed or lacquered steel. Glass, melamine, crystalceramic top available in different sizes.

Top ø120 available only in melamine, glass and crystalceramic marble calacatta.



## Colors and Materials

### Structure



White Steel



Black Steel



Sand Steel



Brown Steel



Grafite Steel

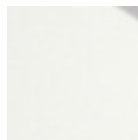


Chrome

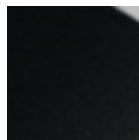
### Coating



Melamine  
8 Colors



White hpl black core



Black hpl



Hpl Cemento



Hpl Corten



Transparent Glass



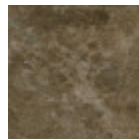
Lead Crystalceramic



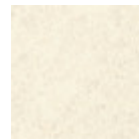
Charcoal Savoia  
Crystalceramic



Cement Savoia  
Crystalceramic



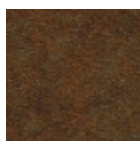
Emperador Marble  
Crystalceramic



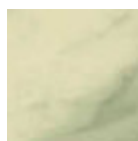
Oxide White  
Crystalceramic



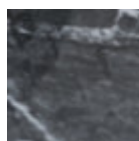
Oxide Sand  
Crystalceramic



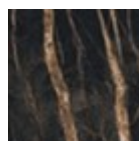
Corten  
Crystalceramic



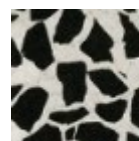
Crystalceramic with  
effect calacatta  
marble



Crystalceramic  
Glossy Black Greek  
Marble



Crystalceramic with  
effect noir desir  
marble



Venetian  
crystalceramic

## Dimensions

Dimensions

## Volumetric Details

**Weight** 44 Kg

**Volume** 0.25 mc

**Package** 2

Image not found or type unknown

	<b>A (cm)</b> (inch)	<b>B (cm)</b> (inch)	<b>C (cm)</b> (inch)
<b>ø60 (cm)</b> (inch)	76 29.9	60 23.6	60 23.6
<b>ø70 (cm)</b> (inch)	76 29.9	70 27.6	70 27.6
<b>ø80 (cm)</b> (inch)	76 29.9	80 31.5	80 31.5
<b>ø100 (cm)</b> (inch)	76 29.9	100 39.4	100 39.4
<b>ø120 (cm)</b> (inch)	76 29.9	120 47.2	120 47.2