



# Forest Extendable Table

design Beatriz Sempere, 2017

Extendable table with lacquered steel base. Glass or crystalceramic top.

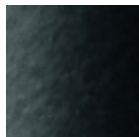


## Colors and Materials

### Structure



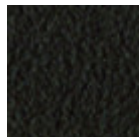
Acciaio Bianco



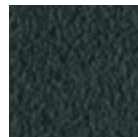
Acciaio Nero



Sand Steel

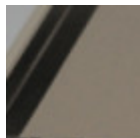


Brown Steel

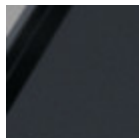


Grafite Steel

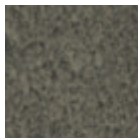
### Coating



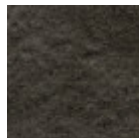
Matt Sand  
Antiscratch Glass



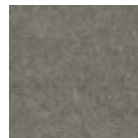
Matt Graphite  
Antiscratch Glass



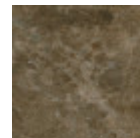
Lead Crystalceramic



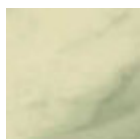
Charcoal Savoia  
Crystalceramic



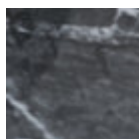
Cement Savoia  
Crystalceramic



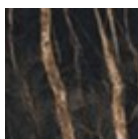
Emperador Marble  
Crystalceramic



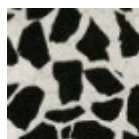
Crystalceramic with  
effect calacatta  
marble



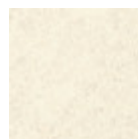
Crystalceramic  
Glossy Black Greek  
Marble



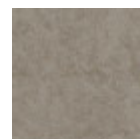
Crystalceramic with  
effect noir desir  
marble



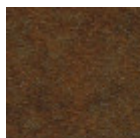
Venetian  
crystalceramic



Oxide White  
Crystalceramic

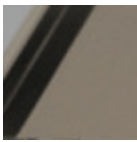


Oxide Sand  
Crystalceramic

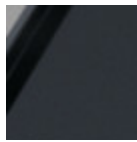


Corten  
Crystalceramic

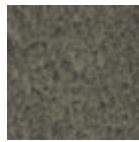
### Extensions



**Matt Sand  
Antiscratch Glass**



**Matt Graphite  
Antiscratch Glass**



**Lead Crystalceramic**



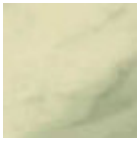
**Charcoal Savoia  
Crystalceramic**



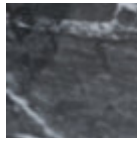
**Cement Savoia  
Crystalceramic**



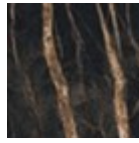
**Emperador Marble  
Crystalceramic**



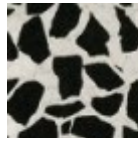
**Crystalceramic with  
effect calacatta  
marble**



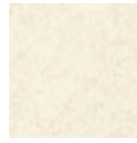
**Crystalceramic  
Glossy Black Greek  
Marble**



**Crystalceramic with  
effect noir desir  
marble**



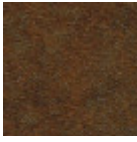
**Venetian  
crystalceramic**



**Oxide White  
Crystalceramic**



**Oxide Sand  
Crystalceramic**



**Corten  
Crystalceramic**

## Dimensions

Dimensions

## Volumetric Details

**Weight** 200 Kg

**Volume** 1.63 mc

**Package** 4

Image not found or type unknown

	cm	inch
<b>A</b>	75	29.5
<b>B</b>	200	78.7
<b>C</b>	100	39.4
<b>D</b>	300	118.1