

Passepartout S M LG_T Chair

design Midj R&D, 2013

Stakable chair with four leg frame in chrome or lacquered steel. Shell in wood finish dark oak or light oak.



Colors and Materials

Structure



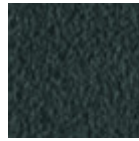
White Steel



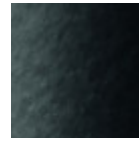
Sand Steel



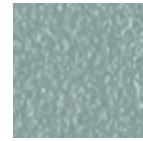
Pastel Yellow Steel



Grafite Steel



Black Steel



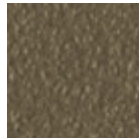
Light blue steel



Ocean Blue Steel



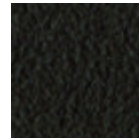
Bronze Steel



Fango Steel



Light Grey Steel



Brown Steel



Ocher Steel



Facepowder Pink
Steel



Red steel



Sage Green Steel

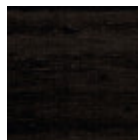


Chrome

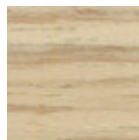
Coating



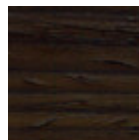
White lacquered
veneered wood



Black lacquered
veneered wood



Veneered wood
natural finish



Veneered wood dark
oak

Dimensions

Volumetric Details

Weight 6.5 Kg

Volume 0.25 mc

Package 1

Image not found or type unknown

	cm	inch
A	81	31.9
B	45	17.7
C	54	21.3
D	46	18.1