



Break 4 Bistrot Table

Break/4 bistro base available in chrome or lacquered steel.

Suitable for round and square top: ø60, ø70, ø80, 60x60, 70x70.

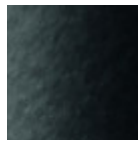


Colors and Materials

Structure



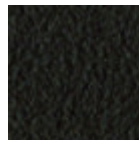
White Steel



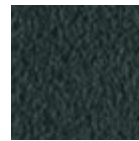
Black Steel



Sand Steel



Brown Steel



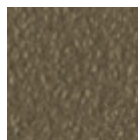
Grafite Steel



Facepowder Pink Steel



Bronze Steel



Fango Steel



Pastel Yellow Steel



Ocher Steel



Red steel



Sage Green Steel



Light blue steel

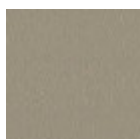


Ocean Blue Steel

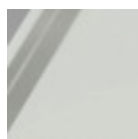


Chrome

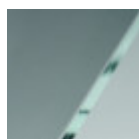
Coating



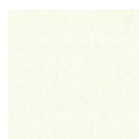
Melamine
8 Colors



Extraclear Glossy
White Glass



Transparent Glass



White Steel



Black Steel



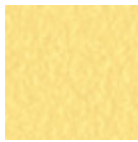
Sand Steel



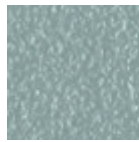
Brown Steel



Grafite Steel



Pastel Yellow Steel



Light blue steel



Ocean Blue Steel



Bronze Steel



Fango Steel



Light Grey Steel



Ocher Steel



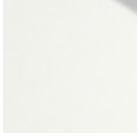
Facepowder Pink Steel



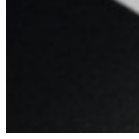
Red steel



Sage Green Steel



White hpl black core



Black hpl



Hpl Cemento



Hpl Corten



White hpl white core

Dimensions

Dimensions

Volumetric Details

Weight 6.5 Kg

Volume 0.20 mc

Package 2

Image not found or type unknown

	A (cm)	B (cm)	C (cm)
	(inch)	(inch)	(inch)
Break / 4	73	45	45
(cm)	28.7	17.7	17.7
(inch)			