



Apelle CL M CU Lounge Chair

design Beatriz Sempere, 2013

Apelle chaise longue with structure in lacquered steel. Seat and backrest are in hide. Available removable headrest cushion.



Colors and Materials

Structure



White Steel



Black Steel



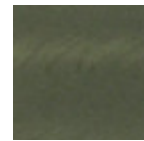
Sand Steel



Brown Steel



Grafite Steel



Industrial Steel

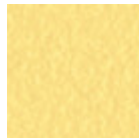
1 color



Fango Steel



Bronze Steel



Pastel Yellow Steel



Ocher Steel



Red steel



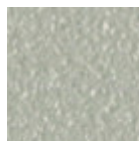
Sage Green Steel



Light blue steel



Ocean Blue Steel



Light Grey Steel



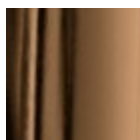
Facepowder Pink Steel



Chrome



Pink Gold

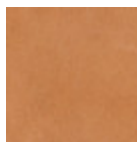


Golden Bronze

Coating



Hide
20 Colors



Tuscan Hide
3 Colors

Dimensions

Dimensions

Image not found or type unknown

	cm	inch
A	94	37
B	56	22.1
C	140	55.1
D	34	13.4

Volumetric Details

Weight 20 Kg
Volume 0.85 mc
Package 1

Downloads

- [Apelle catalog \(pdf\)](https://www.midj.com/images/uploads/resources/2017-catalogo-apelle-midj.pdf) - <https://www.midj.com/images/uploads/resources/2017-catalogo-apelle-midj.pdf>
- [3D Autocad Apelle CL M CU \(zip\)](https://www.midj.com/images/uploads/resources/3d-midj-apelle-cl-m-cu-autocad.zip) - <https://www.midj.com/images/uploads/resources/3d-midj-apelle-cl-m-cu-autocad.zip>
- [3ds Apelle CL M CU \(zip\)](https://www.midj.com/images/uploads/resources/3ds-midj-apelle-cl-m-cu.zip) - <https://www.midj.com/images/uploads/resources/3ds-midj-apelle-cl-m-cu.zip>
- [3D pCon Planner Apelle CL M CU \(zip\)](https://www.midj.com/images/uploads/resources/3d-midj-apelle-cl-m-cu-pcon.zip) - <https://www.midj.com/images/uploads/resources/3d-midj-apelle-cl-m-cu-pcon.zip>
- [3D SketchUp Apelle CL M CU \(zip\)](https://www.midj.com/images/uploads/resources/3d-midj-apelle-cl-m-cu-sketchup.zip) - <https://www.midj.com/images/uploads/resources/3d-midj-apelle-cl-m-cu-sketchup.zip>
- [3D obj Apelle CL M CU \(zip\)](https://www.midj.com/images/uploads/resources/3d-midj-apelle-cl-m-cu-obj.zip) - <https://www.midj.com/images/uploads/resources/3d-midj-apelle-cl-m-cu-obj.zip>

Materials Certifications

Hide

FIRE RESISTANCE:
Technical Bulletin 117/00 sez E part. 1
EN 1021 parte 1/94, parte 2/94
BS 5852/90

PROPRIETIES AND ADVANTAGES

The hide is a hygienic and very practical product: it resists to wear, it's impermeable to water but, at the same time, the hide wicks air and sweat. The hide is obtained from the skin of bovines breeds and slaughtered for food purposes and subsequently treated with chromium salts.

CLEANING INSTRUCTIONS

Use only a damp, non abrasive cloth; do not use products containing solvents or alcohol that may damage the surface. It is advisable to test an invisible area of the product before cleaning it all. For good preservation of the product purchased, it is unadvisable to expose it to direct sunlight that may alter its features and colours. Any surface imperfections are natural features of hide and guarantee that it is an original product.

Materials Certifications

Tuscan Hide

Tuscan Hide does not fear to get aged since the oldest it gets the more unique it becomes. It is a material deriving from animal's leather which suffer a process called "vegetable tanning" with natural tannins and with the help of some products biologically compatible whether for the dyeing or for the finishing. Any possible imperfection, sign, scar, stain of the Tuscan hide surface are a natural characteristics which

guarantees its originality.