



Passepartout S M RS_Q Chair

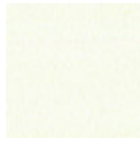
design Midj R&D, 2013

Stakable chair with four leg frame in chrome or lacquered steel. Shell in Restylon®.



Colors and Materials

Structure



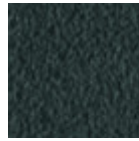
White Steel



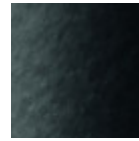
Sand Steel



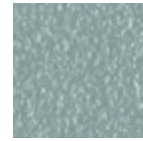
Pastel Yellow Steel



Grafite Steel



Black Steel



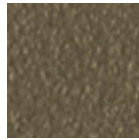
Light blue steel



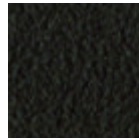
Ocean Blue Steel



Bronze Steel



Fango Steel



Brown Steel



Light Grey Steel



Ocher Steel



Facepowder Pink Steel



Red steel

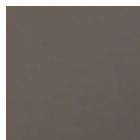


Sage Green Steel



Chrome

Coating



Polypropylene

9 Colors

Dimensions

Volumetric Details

Weight 6.5 Kg

Volume 0.25 mc

Package 1

Image not found or type unknown

	cm	inch
A	81	31.9
B	45	17.7
C	54	21.3
D	49	18.1