



# Pechino ALL Extendable Table

design Midj R&D, 2014

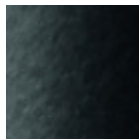


## Colors and Materials

### Structure



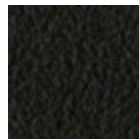
White Steel



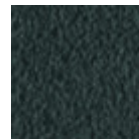
Black Steel



Sand Steel



Brown Steel

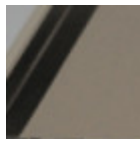


Grafite Steel

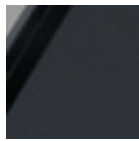


Multicolor Steel

### Coating



Matt Sand Antiscratch Glass

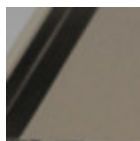


Matt Graphite Antiscratch Glass

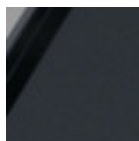


Extra Clear Matt White Antiscratch Glass

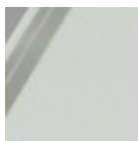
### Extensions



Matt Sand Antiscratch Glass



Matt Graphite Antiscratch Glass



Extra Clear Matt White Antiscratch Glass

## Dimensions

Dimensions not found or type unknown

	A	B	C	D
	(cm)	(cm)	(cm)	(cm)
	(inch)	(inch)	(inch)	(inch)
<b>160/240x106</b>				
<b>(cm)</b>	72	160	106	240
<b>(inch)</b>	28.3	63	41.7	94.5

	<b>A</b>	<b>B</b>	<b>C</b>	<b>D</b>
	<b>(cm)</b>	<b>(cm)</b>	<b>(cm)</b>	<b>(cm)</b>
	(inch)	(inch)	(inch)	(inch)
<b>190/290x106</b>	72	190	106	290
<b>(cm)</b>	28.3	74.8	41.7	114.2
(inch)				

---

## Volumetric Details

**Weight** 233 Kg

**Volume** 1.12 mc

**Package** 4

---

## Downloads

**Pechino fix 3D (zip)** - <https://www.midj.com/images/uploads/resources/pechino-3d.zip>

**Pechino extensible 3D (zip)** - <https://www.midj.com/images/uploads/resources/pechino-all-3d.zip>