

Concave botte Table

design Nicola Bonriposi, 2019

Fixed table with steel base and crystalceramic top.



Colors and Materials

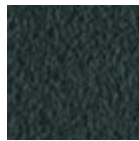
Structure



White Steel



Sand Steel



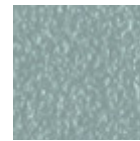
Grafite Steel



Brown Steel



Black Steel



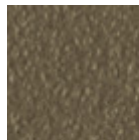
Light blue steel



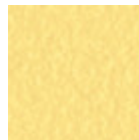
Ocean Blue Steel



Bronze Steel



Fango Steel



Pastel Yellow Steel



Ocher Steel



Facepowder Pink Steel



Red steel

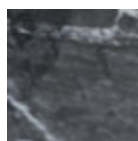


Sage Green Steel

Coating



Crystalceramic with effect calacatta marble



Crystalceramic Glossy Black Greek Marble

Dimensions

Volumetric Details

Weight 400 Kg

Volume 1.6 mc

Package 3

Image not found or type unknown

	cm	inch
A	76	29.9
B	300	118.1
C	120	47.2