



Ola CT 105 Coffee Table

design Paolo Vernier, 2016

Ola coffee table with legs and top in lacquered steel or with industrial effect. Suitable for outdoor use.



Colors and Materials

Structure



White Steel



Black Steel



Sand Steel



Brown Steel



Grafite Steel



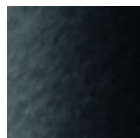
Industrial Steel

1 color

Coating



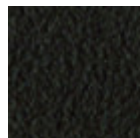
White Steel



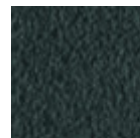
Black Steel



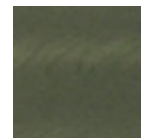
Sand Steel



Brown Steel



Grafite Steel



Industrial Steel

1 color

Dimensions

Image not found or type unknown

Dimensions

	A (cm) (inch)	B (cm) (inch)	C (cm) (inch)
Ola CT 105 (cm) (inch)	45 17.7	105 41.3	47 18.5

Volumetric Details

Weight 10 Kg

Volume 0.24 mc

Package 1