

Trampoliere H73 Bistrot Table

design Roberto Paoli, 2013

Table with 3-pointed base in lacquered or chromed steel. The version with lacquered structure can be used outdoors.

Maximum tray size 80x80 cm (31.5x31.5 in) or ø90 cm (35.4 in).



Colors and Materials

Structure



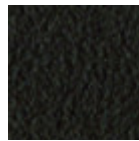
Chrome



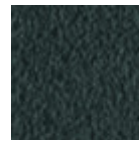
White Steel



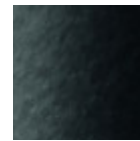
Sand Steel



Brown Steel



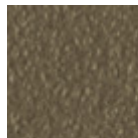
Grafite Steel



Black Steel



Facepowder Pink Steel



Fango Steel



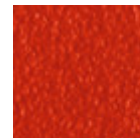
Bronze Steel



Pastel Yellow Steel



Ocher Steel



Red steel



Sage Green Steel

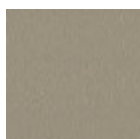


Light blue steel

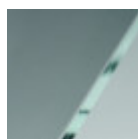


Ocean Blue Steel

Coating



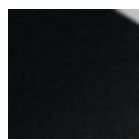
Melamine
8 Colors



Transparent Glass



Extra clear glossy
white glass



Black hpl



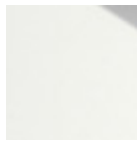
White hpl black core



Hpl Cemento



Hpl Corten



White hpl white core

Dimensions

Dimensions

Volumetric Details

Weight 10.5 Kg

Volume 0.23 mc

Package 2

Image not found or type unknown

	A	B	C
	(cm)	(cm)	(cm)
	(inch)	(inch)	(inch)
Trampoliere	73	50	50
H73 (cm)	28.7	19.7	19.7
(inch)			