

Composit/1 Bistrot Table

Bistrot base with square base in lacquered steel or stainless polished.
Suitable for round or square tops.

Tops size:

Composit 1 base 45 h73: \varnothing 70, \varnothing 80, \varnothing 90, 60x60, 70x70, 75x75, 80x80

Composit 1 base 55 h73: \varnothing 80, \varnothing 90, \varnothing 100, 70x70, 75x75, 80x80, 85x85, 90x90

Composit 1 base 45 h107: \varnothing 70, \varnothing 80, 60x60, 70x70

Composit 1 base 55 h107: \varnothing 80, \varnothing 90, 70x70, 75x75, 80x80



Colors and Materials

Structure



Black Steel



White Steel

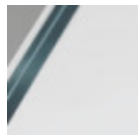


Polished Stainless

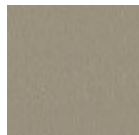
Coating



Transparent Glass



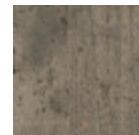
**Extraclear
Transparent Glass**



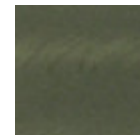
Melamine
8 Colors



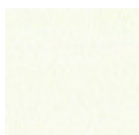
Radius 10 HPL
4 Colors



Topalit
3 Colors



Industrial Steel
1 color



White Steel



Black Steel

Dimensions

Dimensions not found or type unknown

	A (cm) (inch)	B (cm) (inch)	C (cm) (inch)
1 base 45			
h73 (cm)	73	45	45
(inch)	28.7	17.7	17.7

	A (cm)	B (cm)	C (cm)
	(inch)	(inch)	(inch)
1 base 45			
h107 (cm)	107	45	45
(inch)	42.1	17.7	17.7
1 base 55			
h73 (cm)	73	55	55
(inch)	28.7	21.7	21.7
1 base 55			
h107 (cm)	107	55	55
(inch)	42.1	21.7	21.7

Volumetric Details

Weight 24.5 Kg

Volume 0.05 mc

Package 3