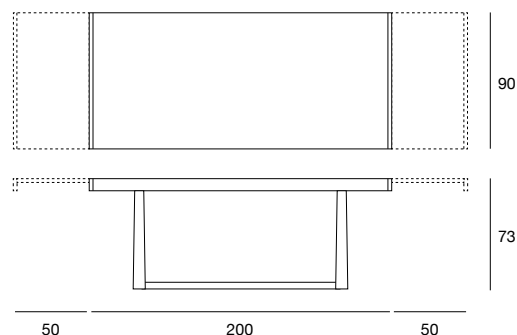


Tavolo da pranzo allungabile con struttura in massello di frassino. Piano e prolunghe laterali placcate frassino. Meccanismo di apertura in alluminio. Finiture disponibili: WG wengé, NC noce, TB tabacco, laccato opaco poro aperto. Extendible dining table with structure in solid ash. Top and side extensions veneered in ash. Aluminium opening mechanism. Available finishings: WG wengé, NC walnut, TB tobacco, open pore matt lacquered.

table
cod.5414



LEGNI
WOODS



NC
frassino tinto noce
ash stained walnut



TB
frassino tinto tabacco
ash stained tobacco



WG
frassino tinto wengé
ash stained wengé

LACCATO OPACO PORO APERTO
OPEN PORE MATT LACQUERED



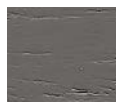
L21
bianco
white



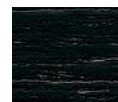
L29
madreperla
pearl



L23
cappuccino
cappuccino colour



L25
grigio fumo
smoke grey



L22
nero
black



L24
rosso
red