

# NELSON

---



Comodino, comò e mobile contenitore. Struttura in listellare di pioppo Italiano, rivestita esternamente in pelle (interno impiallacciato Rovere Moka) o impiallacciato esternamente con legni Europei o esotici (interno in acero naturale). Assemblata a 45°. Base e maniglie MAN-09 in metallo, finitura Ottone Antico. Cassetti con tecnologia di guida completamente sincronizzata e sistema di chiusura soft-close. Anta con cerniere in ottone disegnate da Bellavista Collection, finitura Ottone Antico .

Versioni standard:

NT-13-A: Mobile contenitore composto da n.1 anta e n.3 cassetti .

NT-13-B: Comodino con n.2 cassetti.

NT-13-C: Comò con n.3 cassetti.

*Nightstand. Drawers unit and Cabinet. Structure made in Italian poplar blockboard, outside padded in leather (inside veneered with real Moka stained Oak) or veneered outside with real European or exotic woods (inside with real natural maple wood). 45° assembly. Base and handles MAN-09 in metal, Antique Brass finish. Drawers with fully synchronized slide technology and soft-close damping system. Door with inhouse designed hinges, made in brass, Antique Brass finish.*

*Standard Versions:*

*NT-13-A: Cabinet with no.1 door and no. 3 drawers.*

*NT-13-B: Nightstand with no. 2 drawers.*

*NT-13-C: Drawers unit with no.3 drawers.*

# NELSON

---

## Dettagli | Details



OA | Ottone Antico  
*Antique Brass*

## Finiture standard | *Standard finishes*



E | Ebano  
*Ebony*



SG | Sucupira Grigio  
*Grey Sukupira*



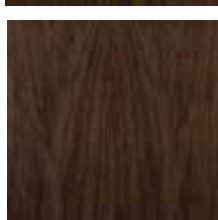
P | Palissandro  
*Rosewood*



NC | Noce Canaletto Naturale  
*Natural American Walnut*



NCS | Noce Canaletto Scuro  
*Dark American Walnut*



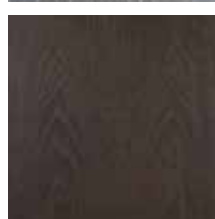
NCM | Noce Canaletto Moka  
*Moka American Walnut*



RN | Rovere Naturale  
*Natural Oak*



RS | Rovere Smoke  
*Smoke Oak*



RG | Rovere Grigio  
*Grey Oak*

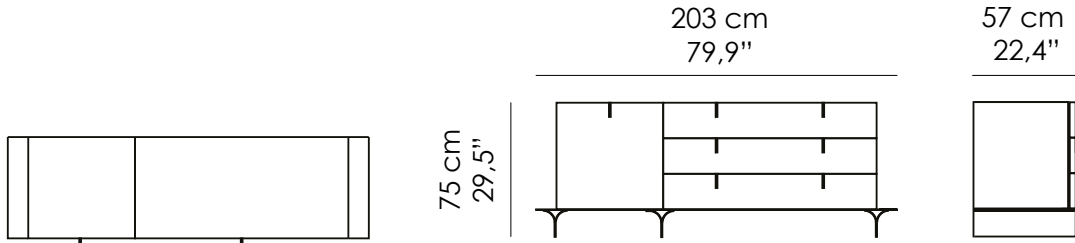


RM | Rovere Moka  
*Moka Oak*

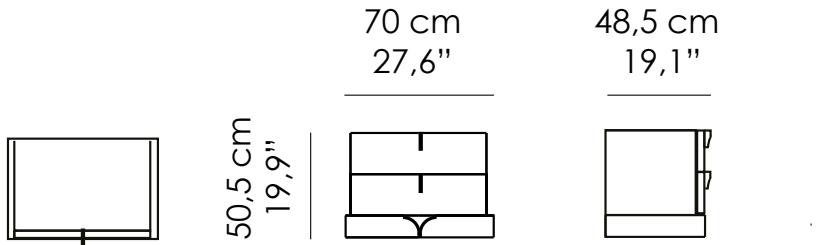
# NELSON

Misure standard | *Standard sizes*

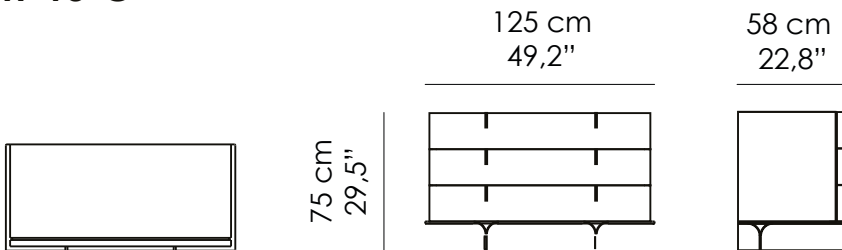
## NT-13-A



## NT-13-B



## NT-13-C





P1.02



P1.03



P1.04



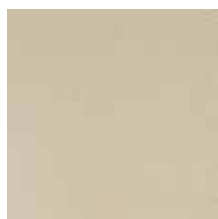
P1.05



P1.07



P1.10



P1.12



P1.13



P1.15



P1.16



P1.17



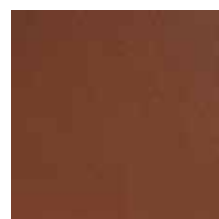
P1.19



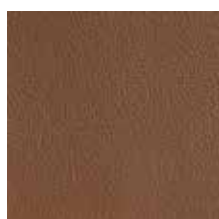
P1.20



P1.21



P1.24



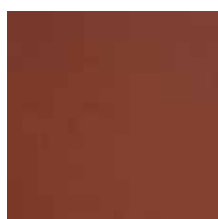
P1.29



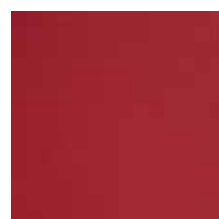
P1.30



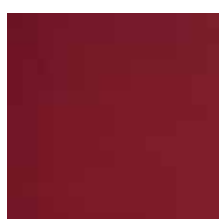
P1.32



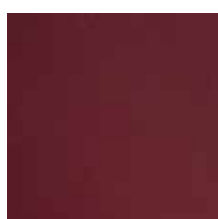
P1.34



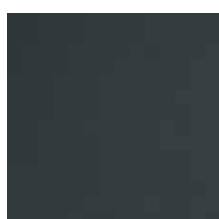
P1.38



P1.39



P1.41



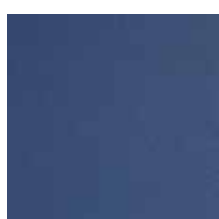
P1.44



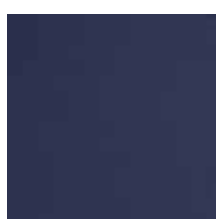
P1.45



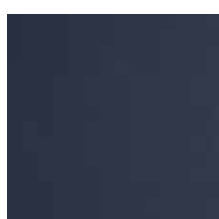
P1.46



P1.49



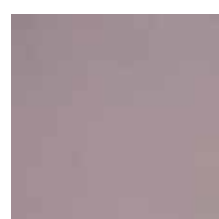
P1.50



P1.51



P1.55



P1.56

COLORI E FINITURE PURAMENTE INDICATIVI | *COLORS AND FINISHES ARE INDICATIVE ONLY.*

PELLE cat. P3 - LEATHER cat. P3

---



P3 A.01



P3 A.02



P3 A.03



P3 A.04



P3 B.01



P3 C.01



P3 C.02



P3 C.03



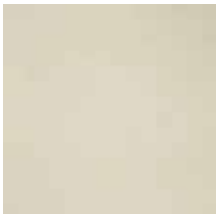
P3 C.04



P3 C.05

PELLE cat. P3. Nabuck - LEATHER cat. P3. Nabuck

---



P3 N.01



P3 N.02



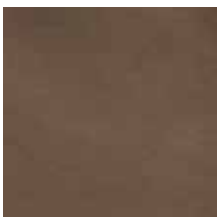
P3 N.03



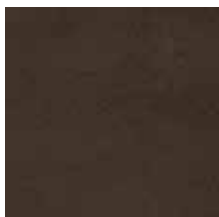
P3 N.04



P3 N.05



P3 N.06



P3 N.07



P3 N.08



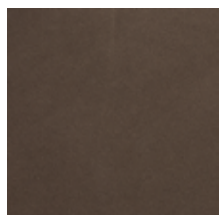
P3 N.09



P3 N.10



P3 N.11



P3 N.12



P3 N.13

COLORI E FINITURE PURAMENTE INDICATIVI | *COLORS AND FINISHES ARE INDICATIVE ONLY.*