

ROSETTA

Pascal Arquitectos Design

Lampada da terra. Struttura in massiccio di Rovere o in massiccio di legno di toulipier, impiallacciata con Sucupira Grigio (SG) o Ebano (E). Dettagli in metallo, finitura Bronzo Antico. Paralume in Poliestere grigio (B.02), bianco (B.12) o tortora (B.16).

Note:

220V - 50 HZ / 1xE27 | cavo trasparente

110V - 60 HZ / 1xE26 | cavo trasparente

Lampadina non inclusa.

Floor lamp. Structure in solid Oak or solid toulipier wood, veneered with real Grey Sukupira wood (SG) or Ebony (E). Details in metal, Antique Bronze finish. Lampshade in Polyester, grey (B.02) or white (B.12) or taupe (B.16).

Notes:

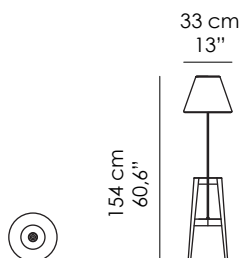
220V - 50 HZ / 1xE27 | transparent cord

110V - 60 HZ / 1xE26 | transparent cord

Light bulb not included.



Misure standard | Standard sizes



100% made in Italy

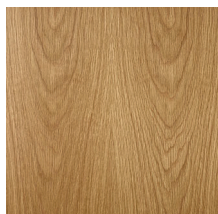
www.bellavistacollection.com

BELLAVISTA
COLLECTION

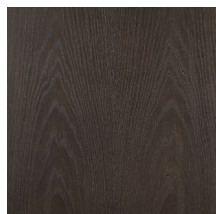
ROSETTA

Pascal Arquitectos Design

Finiture standard Struttura | *Standard finishes - Structure*



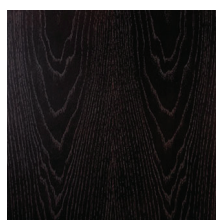
RN | Rovere Naturale
Natural Oak



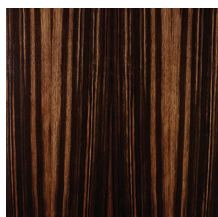
RG | Rovere Grigio
Grey Oak



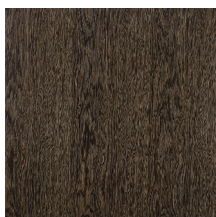
RS | Rovere Smoke
Smoke Oak



RM | Rovere Moka
Moka Oak

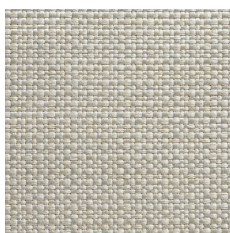


E | Ebano
Ebony

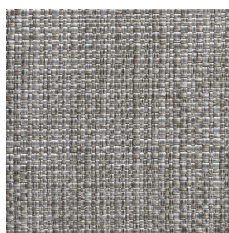


SG | Sucupira Grigio
Grey Sukupira

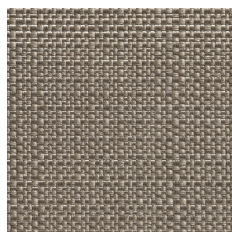
Finiture standard Paralume | *Standard finishes - Lampshade*



PL.12 Bianco *White*



PL.02 Grigio *Grey*



PL.16 Tortora *Taupe*

100% made in Italy

www.bellavistacollection.com