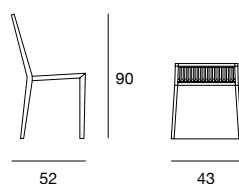


Sedia e poltroncina con struttura in massello di frassino, seduta rivestita in pelle, ecopelle o tessuto della collezione. Rivestimento seduta in tessuto fisso o sfoderabile. Finiture disponibili: WG wengé, NC noce, TB tabacco, laccato opaco poro aperto. Chair and small armchair with structure in solid ash, covered in leather, eco-leather or fabric of the collection. Fixed or removable fabric. Available finishings: WG wengé, NC walnut, TB tobacco, open pore matt lacquered.

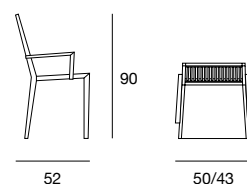
chair
cod.5435
small armchair
cod.5435.1



cod.5435



cod.5435.1



LEGNI
WOODS



NC
frassino tinto noce
ash stained walnut



TB
frassino tinto tabacco
ash stained tobacco



WG
frassino tinto wengé
ash stained wengé

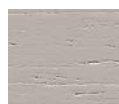
LACCATO OPACO PORO APERTO
OPEN PORE MATT LACQUERED



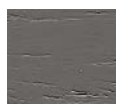
L21
bianco
white



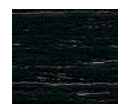
L29
madreperla
pearl



L23
cappuccino
cappuccino colour



L25
grigio fumo
smoke grey



L22
nero
black



L24
rosso
red