

**CATEGORIA
CATEGORY**

A

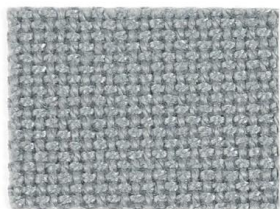
TESSUTO ALTAMENTE IGNIFUGO - FIREPROOF FABRIC

Certificato Classe 1 Ministero dell'Interno

Composizione - Composition: 100% Poliestere FR

Resistenza all'abrasione - Abrasion Test: Martindale 100.000 cicli

Resistenza al fuoco Italia Classe 1 - Flammability Certificates Italy - Class 1



A359



A1610



A455



A201



A202



A305



A614



A953



A651

**CATEGORIA
CATEGORY**

L

TESSUTO ALTAMENTE IGNIFUGO - FIREPROOF FABRIC

Certificato Classe 1 Ministero dell'Interno

Composizione - Composition: 75% lana Wool - 25% poliammide

Resistenza all'abrasione - Abrasion Test: Martindale 100.000 cicli

Resistenza al fuoco Italia Classe 1 - Flammability Certificates Italy - Class 1



L201



L251



L452



L502



L601



L603

CATEGORIA
CATEGORY

B

TESSUTO ALTAMENTE IGNIFUGO - FIREPROOF FABRIC

Certificato Classe 1 Ministero dell'Interno

Composizione - Composition: 100% Poliestere FR

Resistenza all'abrasione - Abrasion Test: Martindale 100.000 cicli

Resistenza al fuoco Italia Classe 1 - Flammability Certificates Italy - Class 1



B1006



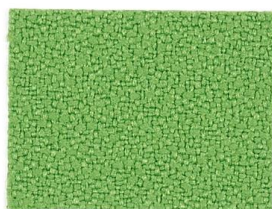
B534



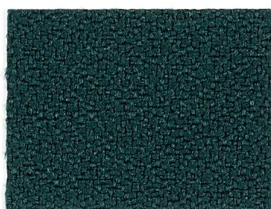
B2031



B9228



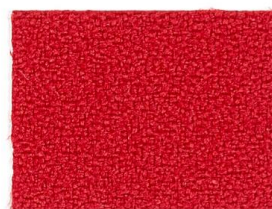
B7013



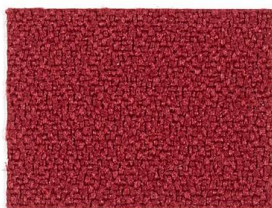
B7033



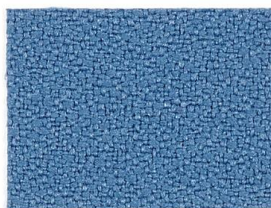
B3094



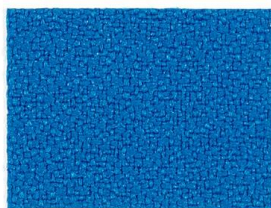
B4008



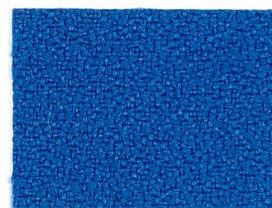
B236



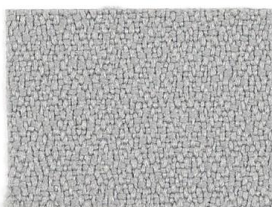
B6026



B6011



B6071



B629



B8010



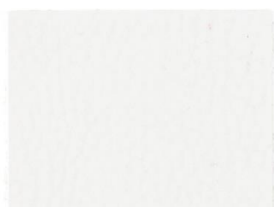
B8033

CATEGORIA
CATEGORY



ECOPELLE ALTAMENTE IGNIFUGA - FIREPROOF FABRIC

Composizione - Composition: 87,5% P.V.C. plastificato - 12,5% cotone
Resistenza all'abrasione - Abrasion Test: Martindale 100.000 cicli
Resistenza al fuoco Italia Classe 1 - Fire resistance Italy - Class 1



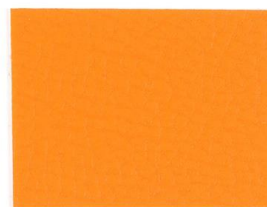
E6



E151



E84



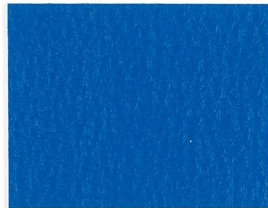
E371



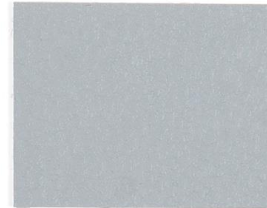
E441



E413



E4975



E4009



E1984



E1304



E336



E560

CATEGORIA
CATEGORY

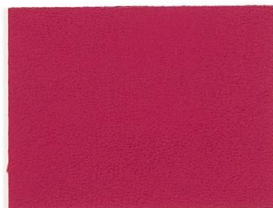


ECOPELLE ALTAMENTE IGNIFUGA - FIREPROOF FABRIC

Composizione - Composition: 63% PU - 29% COT. 8% PES
Resistenza all'abrasione - Abrasion Test: Martindale 150.000 cicli
Resistenza al fuoco Italia Classe 1 - Fire resistance Italy - Class 1
Impermeabilità Waterproof - assenza ftalati phthalates free



X1650



X2750



X1750



X1550



X2350



X1950

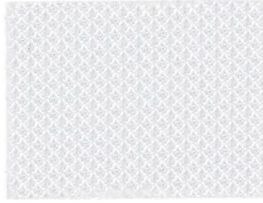
CATEGORIA
CATEGORY

M

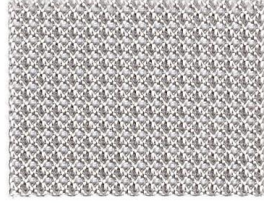
RETE - MESH

Composizione - Composition: 100% Poliestere FR

Resistenza all'abrasione - Abrasion Test: Martindale 25.000 cicli



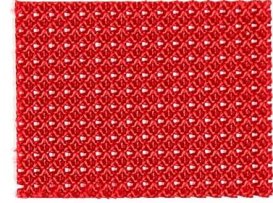
M1



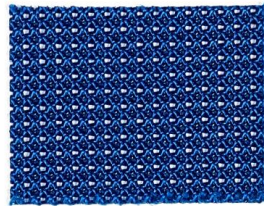
M112



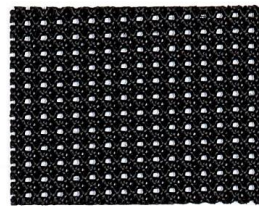
M371



M434



M518



M560

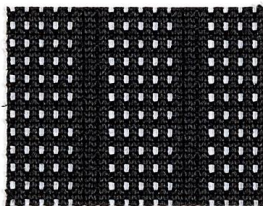
CATEGORIA
CATEGORY

R

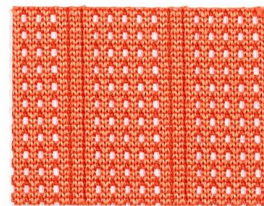
RETE - MESH

Composizione - Composition: 100% Poliestere FR

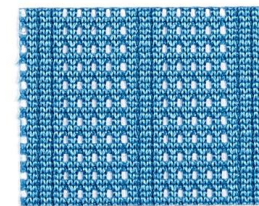
Resistenza all'abrasione - Abrasion Test: Martindale 100.000 cicli



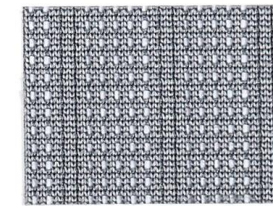
R1



R24



R25



R26

CATEGORIA
CATEGORY

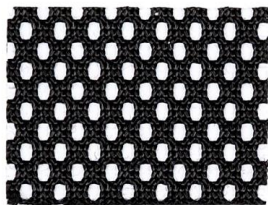
N

RETE - MESH - TESSUTO RICICLABILE - RECYCLABLE FABRIC

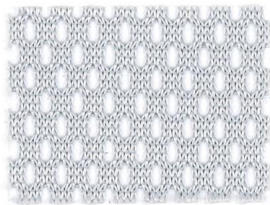
Composizione - Composition: 100% Poliestere FR

Resistenza all'abrasione - Abrasion Test: Martindale 100.000 cicli

Resistenza al fuoco - Flammability Certificates: UNI8457- UNI8457/A1



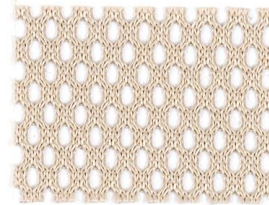
N1



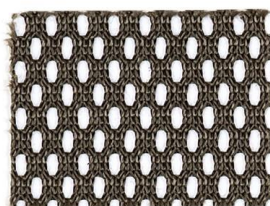
N2



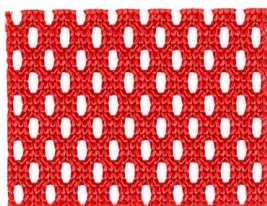
N5



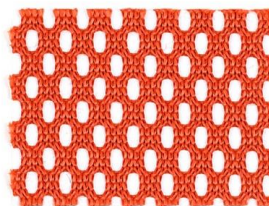
N6



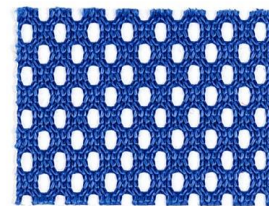
N7



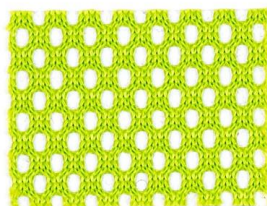
N10



N101



N301



N451

CATEGORIA
CATEGORY

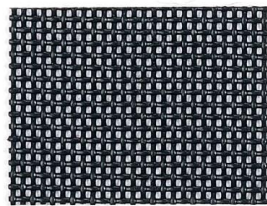
S

RETE - MESH - TESSUTO RICICLABILE100% - RECYCLABLE FABRIC 100%

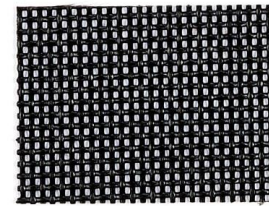
Solo per modello Louisiana Net



S10



S20



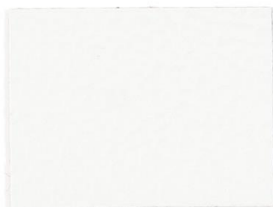
S30

CATEGORIA
CATEGORY

VP

VERA PELLE - LEATHER

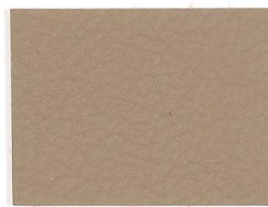
Origine Europea, Pelle bovina smerigliata stampa Madras
Corrected grain Madras bovine leather



VP1



VP21



VP84



VP301



VP336



VP441



VP413



VP560

